

# FLEETWOOD NAUTICAL CAMPUS



# FURTHERING NAUTICAL CAREERS

Train for a rich, rewarding future at sea at the multi award winning Fleetwood Nautical Campus.



HIGH QUALITY  
MARITIME  
TRAINING

REWARDING  
CAREERS  
AT SEA

DEDICATED  
CAMPUS FOR  
MARITIME

£1.3M MARINE  
ENGINEERING  
CENTRE

HIGH-TECH  
FACILITIES

FIRST-RATE  
SKILLS AND  
EXPERIENCE



# WELCOME TO FLEETWOOD NAUTICAL CAMPUS

Do you see yourself as a future Captain, Senior Electro-Technical Officer or Chief Engineer at sea, or working ashore, perhaps as a Ship's Pilot or an Accident Investigator?

With potentially tax-free earnings and a generous leave allowance once you qualify, a career at sea really is an exciting and challenging option for you.

The UK sea trade is expected to double in the next 20 years and there is a clear need for a highly skilled workforce across navigation and engineering disciplines.

Fleetwood Nautical Campus (FNC) has over 130 years' experience of providing first-rate maritime training and we're proud to be shaping the next generation of seafarers.

Cadets from FNC have won the prestigious MCA Officer Cadet of the Year Award an unparalleled ten times in 17 years – the latest winner being in 2023. No other college has achieved this level of success.



This prospectus outlines the excellent career opportunities available and the different progression routes open to you at FNC, on our dedicated, purpose-built campus.

You can also discover more online at [www.fleetwoodnautical.blackpool.ac.uk](http://www.fleetwoodnautical.blackpool.ac.uk) or [www.careersatsea.org](http://www.careersatsea.org)

**I look forward to meeting you on campus.**  
**Captain Neil Atkinson**  
Chartered Master Mariner  
Head of Fleetwood Nautical Campus

## CONTENTS

Welcome	2
Why choose Fleetwood Nautical Campus?	3
All about the Maritime industry	4
Why it pays to be in the Merchant Navy	5
Deck Officer	6
Marine Engineering Officer	7
Electro-Technical Officer	8
Your route to a Merchant Navy career at FNC	9
Entry with GCSEs	10
Entry with 60 UCAS Points or Level 3 Diploma	11
Cadet training pathway	12
Enjoy the journey	14
High-tech facilities	16
Is the Merchant Navy for me?	18
Applying	19
Maritime Apprenticeships	20

**“With their excellent new facilities and their experienced staff, Fleetwood Nautical Campus support and provide our cadets with the knowledge and skills required for the maritime industry.”**

Carnival UK  
*ONE OF THE WORLD'S LEADING CRUISE OPERATORS*

# WHY CHOOSE FLEETWOOD NAUTICAL CAMPUS?

## HIGH QUALITY

- Dedicated campus for all maritime training with state of the art facilities
- In the top 3% of colleges in England for school leaver success<sup>1</sup>
- Degree Cadet Training Programmes
- The BSc Maritime Operations Management Top-up is awarded by Lancaster University<sup>2</sup>
- STEM Foundation approved
- Regular investment in and upgrade of the learning environment

## EMPLOYMENT-FOCUSED

- Providing first-rate maritime training for over 130 years
- Highly qualified, expert tutors with lots of industry experience
- Excellent relationships with employers and industry bodies
- Hands-on and class-based training

## AWARD WINNING SUCCESS

- FNC cadets have won the Maritime and Coastguard Agency Officer Cadet of the Year Award ten times in 17 years – no other maritime education and training provider has achieved this level of success
- 100% of direct entry students who sought sponsorship were successful
- External exam pass rate significantly higher than national average, year on year
- Highest percentage achievement for Certificate of Competency at end of studies – 90%, compared to national average of 60%

## SUPPORTIVE

- An inspiring residential induction, away from the campus in the beautiful Lake District
- High levels of ongoing academic support from our progress tutors
- Ongoing, professional student support and wellbeing always available
- Fun enrichment activities, developing team building and leadership skills
- Weekly activity-based training, including various sporting activities
- Feel part of something special – a close knit, supportive environment where everyone looks out for each other

## AFFORDABLE

- Lower cost of living in North West England
- FREE parking
- No course fees for direct entry students who have not previously attended a funded FE programme
- FREE or discounted travel, FREE breakfast, help with childcare costs if needed<sup>3</sup>, FREE lunch<sup>4</sup> and up to £1200 Guaranteed Bursary and FREE meals if you're in care or receiving certain benefits<sup>4</sup>

Please note: Support with travel, subsistence, childcare and accommodation is only available to eligible 16-18 year-old students on the Direct Entry Level 3 course.



## GETTING PAID TO TRAVEL THE WORLD

Since setting sail as a cadet in 2006, Karley Smith has travelled the world, picked up the MCA Officer of the Year Award and qualified at the industry's highest level - as Master Mariner. She worked for Stena Drilling and part-time for FNC, supporting the next generation of Merchant Navy officers and now works for Brookes Bell.

**“I've had great experiences working in Singapore, Thailand, Malaysia, Brazil and the Mediterranean but I've also experienced winters in the North Sea! Getting paid to travel the world is something most people only dream of, but for a seafarer it's just a regular day at the office.”**

Karley Smith

<sup>1</sup>National Achievement Rate Tables (NARTs) from the Department for Education & Education and Skills Funding Agency 2018/19 <sup>2</sup>The Complete University Guide league tables 2022 <sup>3</sup>Get more information and apply online at [www.gov.uk/care-to-learn](http://www.gov.uk/care-to-learn) <sup>4</sup>Eligibility applies – go to <https://www.blackpool.ac.uk/support/financial-support-16-18s> for details

# ALL ABOUT

# THE MARITIME INDUSTRY

If you want an exciting, rewarding career with great opportunities for progression you should definitely consider the maritime industry.

## WHAT'S THE MARITIME INDUSTRY?

The maritime industry is anything related to the ocean, sea, ships, navigation of ships, seafarers, ship owning and other related activities.<sup>1</sup> Maritime companies cover everything from shipbuilding to maritime law, and there's a huge range of job opportunities – both at sea and ashore.

## WHAT'S THE MERCHANT NAVY?

The Merchant Navy is the collective name for the UK's commercial shipping industry – basically the transportation by sea of goods (cargo) and people (passengers). It's made up of shipping companies who are responsible for the recruitment and training of their own Merchant Navy officers.

**THE UK'S SEA TRADE IS SET TO DOUBLE BY 2040**

MEANING INCREASED DEMAND FOR HIGHLY SKILLED WORKERS IN NAVIGATION, ENGINEERING AND ELECTRO-TECHNICAL.

**OVER 95%**

OF ALL THE UK'S IMPORTS AND EXPORTS ARE BY SEA, MAKING THE MARITIME INDUSTRY THE THIRD LARGEST REVENUE GENERATOR IN THE UK.

# UK MARITIME INDUSTRY TOP FACTS

**185,700 UK MARITIME SECTOR EMPLOYEES<sup>2</sup>**

**23,060 UK SEAFARERS ACTIVE AT SEA<sup>2</sup>**

**484 MILLION TONNES TOTAL UK PORT FREIGHT TONNAGE<sup>2</sup>**

**MERCHANT NAVY OFFICER STARTING SALARY OVER £30,000<sup>3</sup>**

**£46.1 BILLION ANNUAL CONTRIBUTION TO THE UK ECONOMY<sup>2</sup>**

<sup>1</sup>Centre for Economics and Business Research 2016 <sup>2</sup>Shipping and freight resource. <sup>3</sup>Glassdoor - Merchant Navy Officer salaries - accessed 31/10/2023

# WHY IT PAYS TO BE IN THE MERCHANT NAVY

## BROADEN YOUR HORIZONS

Meeting people from different cultures is not just fascinating but makes you more adaptable and a good team player.

## GOOD SALARY POTENTIAL

Merchant Navy starting salaries (once qualified) are higher than most other industries and often exempt from tax.

## LONG LEAVE

Merchant Navy working patterns mean long leave periods, for example for 2 months at sea you get 2 months off.

## LIFE SKILLS

Along with technical and practical seafaring skills, you will also learn valuable skills such as team building, resilience and dedication.

## FANTASTIC CAREER PROSPECTS

This is a growing industry, with well-trained officers in big demand, so there are plenty of opportunities once qualified.

## UNFORGETTABLE EXPERIENCES

A career at sea is like no other and you will gain so many unforgettable experiences along the way.

## ADVENTUROUS LIFESTYLE

Working at sea provides an exciting work environment with no two days the same (very different to the normal '9 to 5' office job).

## TRAVEL THE WORLD

Many sea placements include the chance to visit some amazing destinations you may not have even thought of, while getting paid.

## JOB SATISFACTION

A career at sea is rewarding in so many ways. You're part of a close-knit team who become like family.

## WORLDWIDE EMPLOYMENT

You will gain an internationally recognised qualification, which means you can literally work anywhere in the world.

## CONTINUOUS DEVELOPMENT

This is a highly skilled profession with ongoing training opportunities to develop you personally and professionally.

## TRANSFERABLE SKILLS

You will gain many high level, transferable skills that are very relevant to a wide range of industries.

## SPONSORSHIP AND EARNINGS

As a Merchant Navy cadet, your training will be paid for by the shipping company which takes you on – your sponsoring company. During training the company usually pays you an allowance, which covers your accommodation while at College.

Once qualified your starting salary could be anything over £30,000. Chief Officers and Second Engineers can earn up to around £55,000 a year and Masters (Captains) and Chief Engineers can earn up to £75,000 or more a year.

While at sea, your food and accommodation is provided by the company as well as your travel costs, which are paid for by your shipping company. On foreign-going ships, your earnings may be tax free.



# DECK, ENGINEERING OR ELECTRO-TECHNICAL?

## DECK OFFICER

### WHAT DO THEY DO?

Deck Officers are responsible for the safety of crew, passengers and cargo. Once you've berthed the ship in port you would oversee the cargo operations, while maintaining the safety and security of the ship. You would be central to the navigation of the vessels at sea, using the latest technology and computer-based systems.

### QUALITIES AND SKILLS NEEDED

A Deck Officer is a vital member of the ship's management team – responsible for making decisions on navigation and communications. So it's important to be a good team member, decisive, calm and someone who inspires confidence in others. You'll be interested in technology and have good mathematical, written and verbal skills. Overall – confidence, enthusiasm and self-reliance are essential.



## MARINE ENGINEERS

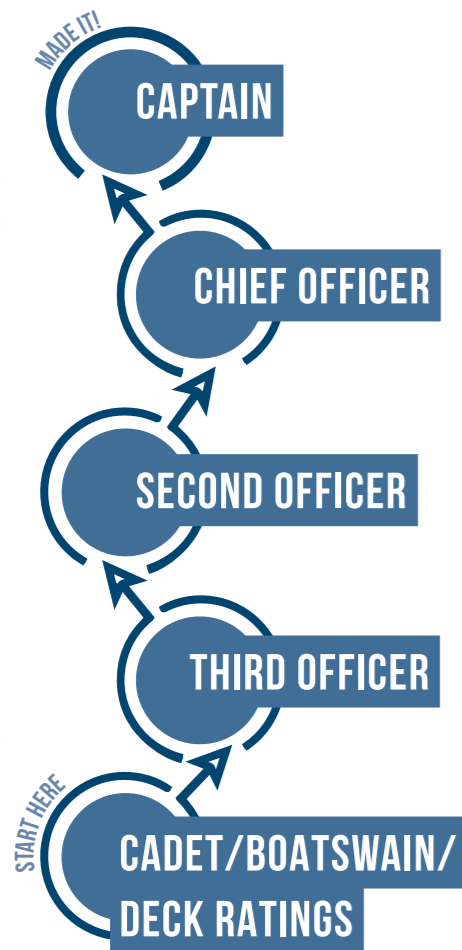
### WHAT DO THEY DO?

Marine Engineer Officers are responsible for the safe running of the ship's engine, cooling systems, control systems and all mechanical and electrical systems on board including all the propulsion, power generation and distribution systems throughout the ship.

### QUALITIES AND SKILLS NEEDED

Marine Engineering Officers need to be practical, resourceful and have a real interest in mechanical and electrical systems. Good problem-solving ability is key, along with good maths and communication skills. You'll be decisive, calm and able to inspire confidence in others. Overall, you'll always be prepared to learn about new technology and adapt your skills to using it.

## CREW RANKINGS



**The Captain (Master)** holds the highest position on the vessel and has command of the ship and crew. They have overall responsibility for the ship, her cargo, passengers and all crew, and are responsible for the ship to comply with any custom and immigration regulations.

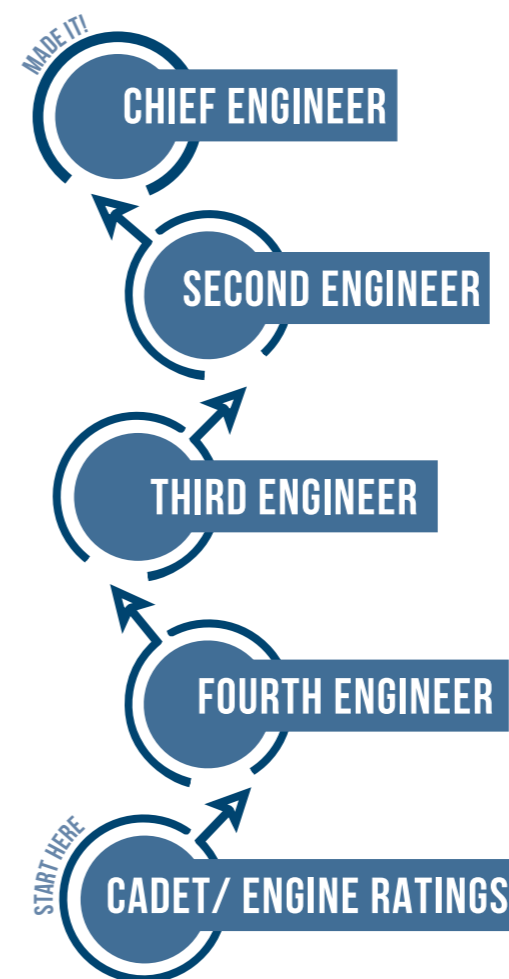
**The Chief Officer (Chief Mate)** is the next in rank after Master. They are in charge of vessel navigation, cargo operations, deck machinery and maintenance of deck equipment, and safety of the vessel. The Chief Officer also manages other officers on deck.

**The Second Officer** is the next in rank after the Chief Officer and is the ship's navigator. Their main duty is to prepare the passage plan and upkeep the chart folio and navigational publications. The Second Officer may also train cadets or fulfil the rank of a safety, environmental or medical officer.

**The Third Officer** is usually the Ship's Safety Officer, undertaking watchkeeping duties and also ensuring the functionality of lifesaving appliances.

**A Cadet** on board a merchant vessel receives structured training and experience, and learns how to become a Deck Officer. Apart from the officers, the deck crew also consists of ratings, such as Seafarer (Deck Rating), OS (Ordinary Seaman) and Boatswain.

## CREW RANKINGS



**The Chief Engineer** is the head of the ship's Engineering Department. They are responsible for the safety of crew working in the engine room and ensure that the engine room machinery works properly for a safe voyage.

**The Second Engineer** assists the Chief Engineer in the safe and efficient management of the Engineering Department. This involves looking after the entire operation of the engine room and other technical aspects of the ship.

**The Third Engineer** will perform engine watchkeeping duty as well as monitor and maintain equipment as directed by the Second Engineer. They are usually responsible for the charge of boilers, fuel, auxiliary engines, condensate and feed systems.

**The Fourth Engineer** is the most junior Engineering Officer, who has duties assigned by the Second Engineer and typically is responsible for engine watch, air compressors, purifiers, and other auxiliary machinery.

**A Cadet** on board a merchant vessel receives structured training and experience and learns how to become an Engine or Electrical Officer. Apart from the officers, the Engineering crew consists of Ratings, such as Motorman, Fitter, Electrician, Pumpman and Oiler/Wiper.

EXCITING SHORE-BASED OPPORTUNITIES EXIST TOO!



## ELECTRO-TECHNICAL OFFICERS

### WHAT DO THEY DO?

Electro-Technical Officers are responsible for maintenance and monitoring of all electrical/electronic/IT equipment/systems on board e.g. engine room automation, communication devices, navigation equipment, entertainment equipment.

### QUALITIES AND SKILLS NEEDED

ETOs need to be practical, resourceful and have a real interest in mechanical and electrical systems. Good problem-solving ability is key, along with good maths and communication skills. You'll be decisive, calm and able to inspire confidence in others. Overall, you'll always be prepared to learn about new technology and adapt your skills to using it.

The **SETO** is equivalent to Chief Engineer or just below and take a more managerial role on ETO related activities onboard ship.

The **Electro-Technical Officer** (ETO) rank sits between third and second engineer level and looks after all the highly advanced IT, electronic, automation and electrical equipment on board the ship. ETOs assist the Chief Engineer/Senior ETO in handling routine electrical works and coordinates work with onshore technicians.

A **Cadet** on board a merchant vessel receives structured training and experience and learns how to become an Engine or Electrical Officer. Apart from the officers, the Engineering crew consists of Ratings, such as Motorman, Fitter, Electrician, Pumpman and Oiler/Wiper.



## YOUR ROUTE TO A MERCHANT NAVY

## CAREER AT FLEETWOOD NAUTICAL CAMPUS

At FNC, you can start your Merchant Navy training with sponsorship (i.e. after successfully passing an interview with a shipping company) or without sponsorship (with successful students having an opportunity to gain sponsorship further down the line).

### WHAT IS CADET SPONSORSHIP?

We work in partnership with shipping companies and training companies, which sponsor cadetships. You apply to the company and, if successful, are recruited by them for the duration of your cadetship. As well as providing sponsorship during your course, they also arrange your sea time (time aboard ship) as part of your cadetship. Sponsored students have their fees and a monthly allowance paid by their sponsor.

### WHAT IF I DON'T HAVE A SPONSORSHIP?

If you don't have a sponsorship, you can still undertake the Level 3 Diploma in Shipping and Maritime Operations (in Deck or Engineering) with us as a direct entry student. If you are under 19 and haven't previously completed a funded Further Education programme, you may be eligible to have your course fees waived. On successful completion of the Level 3 Diploma, we will support you to gain a sponsored cadetship.

Information on all our courses can be found on our website - <https://fleetwoodnautical.blackpool.ac.uk/maritime>



I have always been excited about a life at sea, and the course helps you to see more of what it would really be like, especially through the college simulators. The ratio of practical to theory work is about 50/50, which I think is the perfect balance.

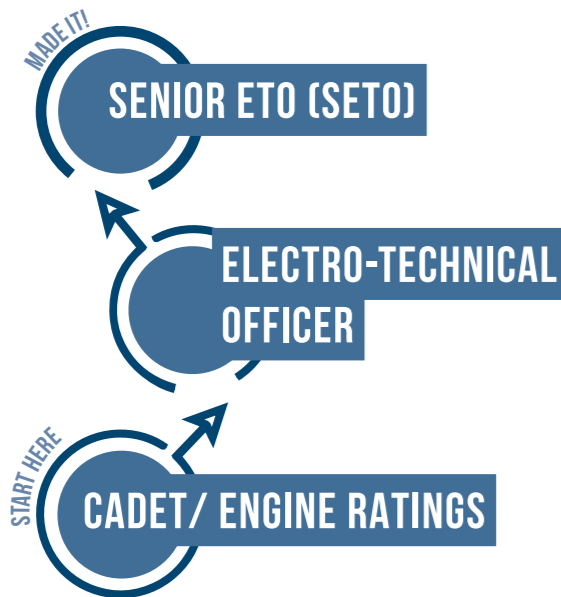
**William Clarke**  
Level 3 Diploma in Shipping and Maritime Operations



I'm excited to be doing the Engineering course at Fleetwood Nautical Campus. I chose this course as I was told how good it was by a family member that had done it a few years ago. I'm hoping to find a sponsor and then proceed to go to sea with my company. After I finish my course I hope to get a job as an engineer on an oil tanker.

**Charlie Gellatly** Level 3 Diploma (Engineering), Shipping and Maritime Operations

## CREW RANKINGS





## ENTRY WITH GSCES

Students can be **sponsored** or **non-sponsored**.

**Sponsored students** will have fees paid by their sponsor.

**Direct Entry students aged 16-18** will have fees covered under Government funding arrangements (with some exceptions, please check with us), but accommodation cost will be applicable if not from the local area.

**Direct Entry students aged 19 or over** may be eligible for an Advanced Learner Loan or Free Courses for Jobs.

## LEVEL 3 DIPLOMA IN SHIPPING AND MARITIME OPERATIONS - DECK OR ENGINEERING

Provides an overview of the maritime industry, how it's regulated and the different functions at sea and ashore. This also provides the industry specific knowledge, skills, and behaviour to step into higher education.

Delivered over two College terms (around 25 weeks).

### Academic entry requirements

4 GCSEs grades 9-4, including English, maths, and science.

## Next Steps

### On successful completion:

Sponsored students will progress to the next stage of their cadetship (see below)

Direct Entry students - we will support you to gain an interview for sponsorship with one of our sponsoring shipping companies. On successfully achieving a sponsorship you would be able to progress to the next stage (see below).

## ADVANCED CERTIFICATE/ADVANCED DIPLOMA

The Advanced Certificate (AdC) qualification is roughly equivalent to the first year of university and fulfils the academic requirements needed to become a Merchant Navy officer at operational level.

### Available in three pathways:

- **Nautical Science**
- **Marine Engineering**
- **Electro-Technical**

*On successful completion, you will have all the knowledge and skills necessary to work onboard ships.*

## FURTHER CAREER OPTIONS

### BSC TOP UP MARITIME OPERATIONS MANAGEMENT

This is a future-focused programme that will enable you to develop the essential knowledge and skills preparing you for future success in work and life across the maritime industry.

### Available in three pathways:

- **Nautical Science**
- **Marine Engineering**
- **Electro-Technical**

### Academic entry requirements

A relevant Level 5 qualification, either the STCW-aligned Foundation Degree or Advanced Diploma/Higher National Diploma at a UK Maritime Academy.

Students enrolling onto the programme with an Advanced Diploma/Higher National Diploma will need to complete a three-week pre-entry bridging module prior to the course commencement, which will be delivered via blended learning.

## Career options

Upon successful completion of the programme, you could consider a wide range of roles across the maritime industry. Whether you wish to remain at sea, or come ashore, this programme provides you with the knowledge and skills required to move into managerial roles across the sector. This management qualification is awarded by Lancaster University, ranked 14th in the overall league table of The Times 2023 Good University Guide.

For more detailed information about this programme, go to our website.

**\*Subject to sponsor funding or obtaining a student loan.**



## ENTRY WITH 60 UCAS POINTS OR LEVEL 3 DIPLOMA IN SHIPPING AND MARITIME OPERATIONS

### SPONSORED STUDENTS

### BSC (HONS) OR BENG (HONS)

These programmes require a more self-disciplined approach to learning but give you a broader range of graduate skills.

### Available in three pathways:

- **BSc (Hons) Nautical Science**
- **BEng (Hons) Marine Engineering**
- **BEng (Hons) Marine Electrical and Electronics Engineering**

### Academic entry requirements

60 UCAS points at A/AS level, including subjects which support the application and GCSE Mathematics (level 5 or above), Science and English Language (level 4 or above or equivalent letter grades).

### Alternate entry qualifications

If you hold other qualifications that are equivalent to the above, the programme team will review evidence regarding your ability to undertake the programme. The award of credits via Recognition of Prior Learning (RPL) will be assessed on an individual basis.

We will also consider your application if you have a Level 3 Diploma in Shipping and Maritime Operations with a letter of recommendation, usually from your sponsor or Level 3 programme leader, on your aptitude for studying at degree level.

## OTHER ENTRY REQUIREMENTS

### Anyone wanting a career at sea needs:

- to be at least 16
- UK residency (including a valid UK passport)
- to pass the MCA Seafarer Medical Examinations (ENG1), designed to highlight medical conditions that would be difficult to treat - or could become worse - while at sea (organised through your shipping company)

## PROGRESSING THROUGH THE RANKS

Completing your Advanced Certificate/Advanced Diploma as well as the Maritime and Coastguard Agency (MCA) written and oral exams means you can achieve an MCA Certificate of Competency as an Officer of the Watch (OOW) or Engineering Officer of the Watch (EOOW).

## BACHELORS DEGREE PROGRAMMES

The UK residence rules do not apply to these programmes and applications are welcome from overseas candidates.

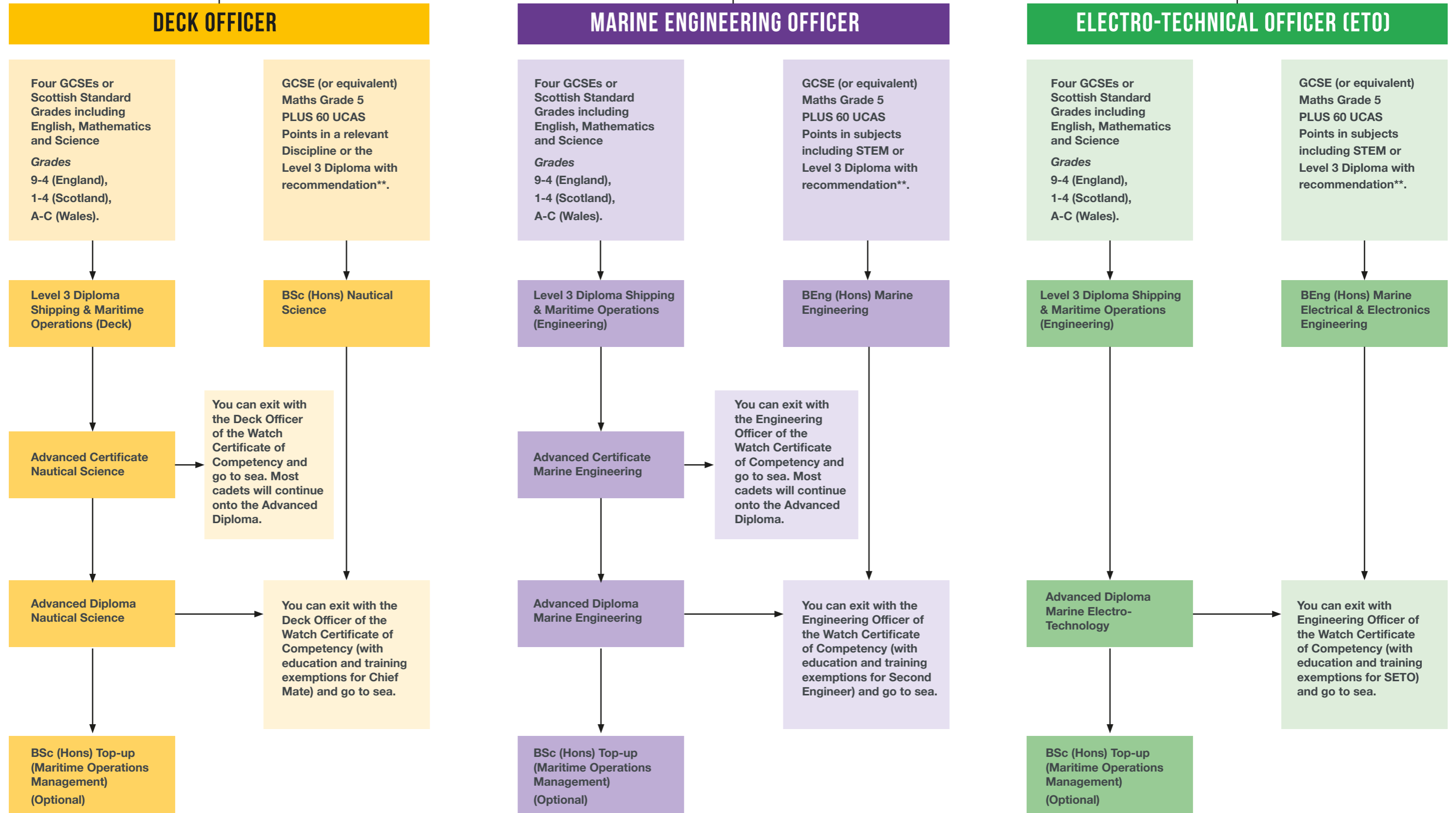


If you complete a Level 3 Diploma without sponsorship (this is called Direct Entry), we will support you in obtaining sponsorship for your cadetship.

Choose your pathway:  
(Deck (Nautical Science),  
Marine Engineering or  
Electro-Technical)

# UK MERCHANT NAVY CADET TRAINING SPONSORSHIP

Two entry routes – with GCSEs (or equivalent) OR with 60 UCAS points in STEM related subjects\* and GCSE Grade 5 in maths (or equivalent)



\*Subjects contributing to the 60 UCAS points will be reviewed upon application.

\*\* Students who have completed the Level 3 Diploma and whom the programme team judge to have the necessary aptitude and study skills can progress directly onto the Bachelors programmes without the required UCAS points.

# ENJOY THE JOURNEY

When you join FNC, you're not just starting college, you're starting an exciting new adventure. Look forward to an inspiring environment where you can enjoy good times, grow your confidence and gain valuable skills for the future.

## CADET DEVELOPMENT COURSE

KICK OFF WITH OUR TEAMBUILDING WEEK IN THE LAKE DISTRICT

ON-SITE HALLS OF RESIDENCE AND REFECTORY

FULL SKY TV PACKAGE, POOL TABLE, TABLE TENNIS, DART BOARD AND OTHER GAMES

GET TO KNOW YOUR CLASS MATES

PUT YOURSELF TO THE TEST

## COMPETITIONS

WINNERS OF THE MARITIME AND COASTGUARD AGENCY (MCA) UK OFFICER TRAINEE OF THE YEAR (9 OUT OF 16 YEARS)

EVERYTHING FROM ROCK-CLIMBING TO CANOEING

## RELEVANT TRIPS

GET REAL-LIFE INSIGHT INTO YOUR CHOSEN CAREER

## NAUTICAL STUDENT SOCIETY

REAL-LIFE INSIGHT INTO THE MARITIME INDUSTRY

## INDUSTRY EXPERIENCE

GET HANDS-ON TO PREPARE FOR YOUR CAREER AT SEA

## ACADEMIC SUPPORT

A PERSONAL PROGRESS TUTOR AND DROP-IN CLINICS (FOR EXTRA HELP)

## ON-SITE HALLS OF RESIDENCE

A CHOICE OF ROOMS AND PRICES WITH A 24/7 WARDEN

TRAVELLING BACK IN TIME AT FLEETWOOD MARITIME MUSEUM

## ACTIVITY-BASED TRAINING

WEEKLY ACTIVITIES TO BUILD LEADERSHIP SKILLS

## PASTORAL SUPPORT

ONGOING ACCESS TO ALL THE HELP AND SUPPORT YOU NEED

## SPORTS, CLUBS AND SOCIETIES

GET ACTIVE, HAVE FUN OR TRY SOMETHING NEW

## OUTDOOR SPORTS

BRAND NEW MULTI USE GAMES AREA

## DIVERSITY IN MARITIME

WE ARE PROUD TO BE A MEMBER OF WOMEN IN MARITIME NETWORK

## DEGREE +

DEMONSTRATE YOUR ACHIEVEMENTS THROUGH OUR 'ADDED EXTRAS' AWARD

## CAREERS TEAM

PROFESSIONAL ADVICE TO HELP YOU PLAN YOUR FUTURE

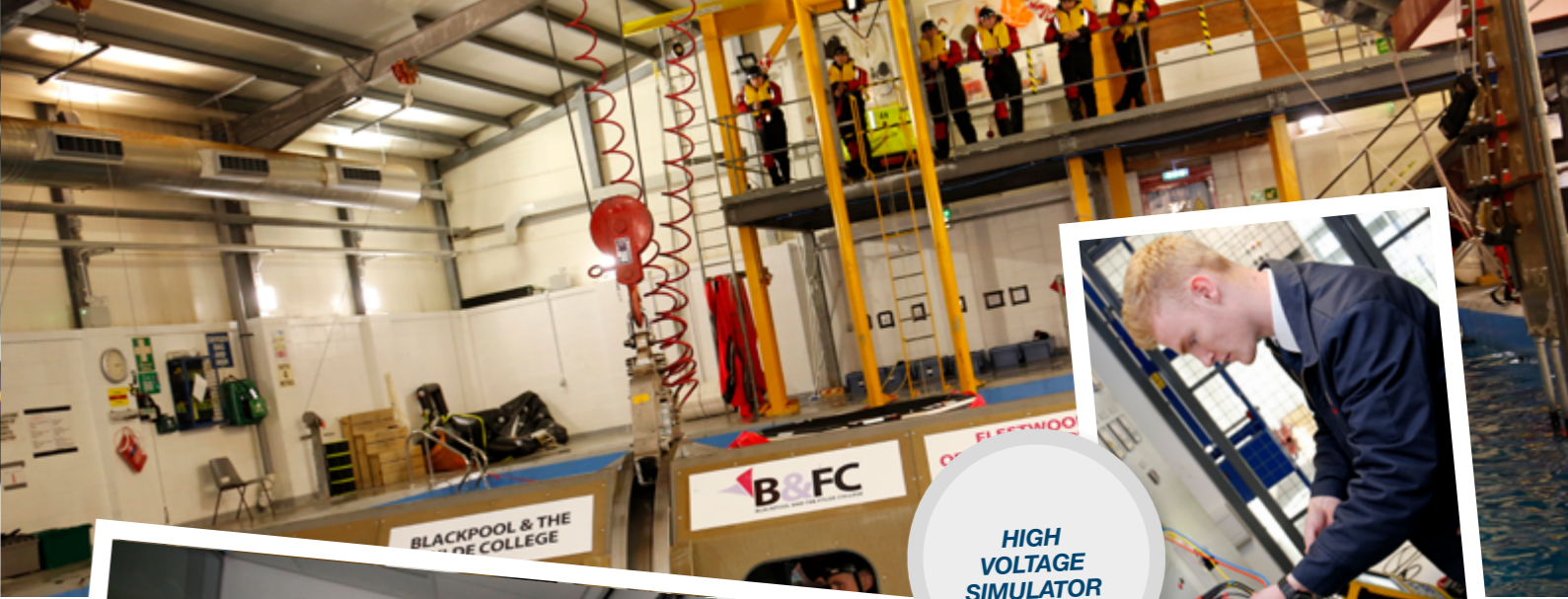
## PROFESSIONAL BODY MEMBERSHIP

LEADING TO PROFESSIONAL REGISTRATION



# HIGH-TECH FACILITIES

CONSTANT INVESTMENT IN OUR FACILITIES MEANS THE LATEST TECHNOLOGY AND RESOURCES AT OUR AMAZING PURPOSE-BUILT CAMPUS.



FULL MISSION SHIP BRIDGE SIMULATORS



£1.3M MARINE ENGINEERING CENTRE



ELECTRONICS LAB



ONE OF THE UK'S LARGEST ENGINE ROOM SIMULATORS



HIGH VOLTAGE SIMULATOR



ENVIRONMENTAL TRAINING TANK



SIMULATED REALITY EXPERIENCE



FIRE-FIGHTING TRAINING FACILITY



CUTTING EDGE LEARNING RESOURCE CENTRE

“ These new facilities are bringing what is already an excellent training establishment ahead of other establishments. ”  
Trinity House (A LEADING SHIPPING AND SEAFARERS' CHARITY)

# IS THE MERCHANT NAVY FOR ME?

## CONSIDER YOUR STRENGTHS

It takes a certain type of person to succeed in the Merchant Navy. That goes for whether you choose the Deck, Engineering or Electro-technical route. Being honest about where your strengths lie can help you decide early on if this is the career for you.

## YOU'LL NEED:

- an interest in Science, Technology, Engineering and Mathematics (STEM subjects )
- good maths, IT and computer skills
- problem-solving ability
- self-discipline
- a strong sense of responsibility
- good communication skills
- integrity and initiative
- good leadership and management skills
- attention to detail
- good timekeeping!

## YOU'LL BE EXPECTED TO:

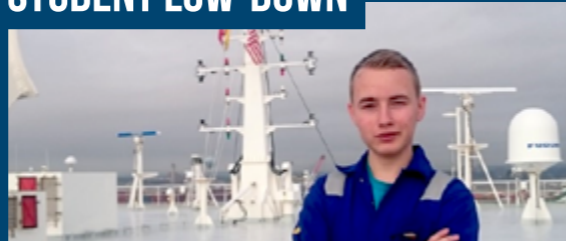
- obey orders when required
- work long hours
- work to deadlines
- work on your own and as part of a team
- handle complex information
- work under pressure
- plan and organise your work
- react quickly to emergencies and stay calm

## BEAR IN MIND...

A career at sea is hugely rewarding yet challenging at the same time. You might need to spend long periods away from home (sometimes in adverse weather conditions), often with people you barely know. But some people see this as exciting, almost like an adventure – it just depends on how you look at it...



## STUDENT LOW-DOWN



## WHAT'S IT LIKE WORKING AT SEA?

“ My vessel was a container roll-on/roll-off vessel with a large recreation area for relaxing, playing games and watching movies. We had a gym and a sauna and the Wi-Fi was good enough to call friends and family. I've enjoyed the freedom and the travelling, visiting new countries and getting to know lots of different people!

*Damon Wolstenholme*



## WHAT'S THE COURSE LIKE?

“ It's challenging but rewarding. Clinics for all the subjects are available in the evenings, and most lecturers will be happy to help you on a one-to-one basis after class. Activity-based training is once a week - a fun and active few hours to develop new interests and just have a good time.

*Sarah-Jayne Hartley-Rudd*



# APPLYING

## LEVEL 3 DIPLOMA (DIRECT ENTRY)

### – WITHOUT SPONSORSHIP

## 1. COMPLETE AN APPLICATION

Apply for either the Deck or Engineering direct entry course online at [fleetwoodnautical.blackpool.ac.uk/courses/cadet-preparation](http://fleetwoodnautical.blackpool.ac.uk/courses/cadet-preparation)

## 2. ATTEND AN INTERVIEW

This is your chance to meet a tutor, ask questions and make sure you're on the right career path.

## 3. CONFIRM YOUR OFFER

Following your interview, we'll write to you with full details of your offer. It's important you confirm your acceptance of this offer as soon as possible so we can reserve a place for you.

## 4. ATTEND A TASTER DAY

We'll invite you to our taster events, where you can meet your future class mates and take part in subject-related activities.

## 5. ENROL

Enrolment takes place on GCSE results day (providing you achieve the required grades) and is when you officially become a College student. We'll let you know beforehand where and when to go, and what to bring.

## SPONSORED COURSES

If you have the correct entry requirements but want to attempt to gain sponsorship on your own, you will need to apply to a shipping company or training organisation direct.

### SHIPPING COMPANIES:

- AW Crewing Services Ltd
- BP Maritime Services
- Carnival UK
- James Fisher and Sons
- Pacific Nuclear Transport Ltd (PNTL) – AW Crewing
- Princess Cruises
- Royal Fleet Auxiliary
- Shell Ship Management
- VShips
- Kuwait Oil Tanker Company

### TRAINING ORGANISATIONS:

- Anglo Eastern UK Ltd
- Clyde Marine Training Ltd
- Ship Safe Training Group
- Viking Recruitment Ltd
- Just Be Maritime

## STAY IN TOUCH

At any stage of the application process, we're around to help and advise – just contact us on T 01253 504 800

E [maritime@blackpool.ac.uk](mailto:maritime@blackpool.ac.uk)

### ALTERNATIVE PROSPECTUS FORMAT

To receive this prospectus in an alternative format please contact our Student Support and Wellbeing Team on:

T 01253 504 356

E [learningsupport@blackpool.ac.uk](mailto:learningsupport@blackpool.ac.uk)

## EQUALITY FOR ALL

B&FC is committed to equality, diversity and wellbeing in all its activities for everyone who learns and works here. We respect and value difference in race and ethnic origin, gender, disability, mental health, sexual orientation, age, religion and belief, additional learning, economic and social background.

“The best part about it is making friends and experiencing so many new things.” Liam Sharp

# MARITIME APPRENTICESHIPS

## ABOUT APPRENTICESHIPS

Student image: Andrew Hartnett

An Apprenticeship is a job with an accompanying skills development programme under an Apprenticeship Agreement designed by employers in the sector. It allows the apprentice to gain technical knowledge and real practical experience, along with functional and personal skills required for their immediate job and future career. These are acquired through a mix of learning in the workplace, formal off the job training and the opportunity to practice and embed new skills in a real work context.

## SEAFARER (DECK RATING) — LEVEL 2 APPRENTICESHIP

### ABOUT THIS APPRENTICESHIP

This is a Level 2 apprenticeship. A Seafarer (Deck Rating) works as a member of the navigation department on board ships and vessels of different types and sizes, carrying out the following tasks:

- **watchkeeping duties**
- **maintaining the safety and security of the vessel, cargo and personnel on board**
- **undertaking a range of practical seafarer skills covering ropework**
- **administering first aid**
- **carrying out fire prevention and firefighting duties**
- **operating survival craft and rescue boats**
- **anchoring and mooring activities and operations**

You'll work a shift rota both on your own and as part of a team and must be able to work safely in enclosed spaces and at heights and respond to vessel emergencies.

### ENTRY REQUIREMENTS

The apprentice must:

- have the right to work in England
- be 18 or older
- be physically fit and obtain a Maritime and Coastguard Agency ENG1 medical fitness certificate <https://www.gov.uk/seafarer-medical-certificates>
- have Level 2 English and Maths (GSCE4-9). Applicants not meeting English and Maths requirements will need to achieve this level of functional skills before End Point Assessment

Beyond this, employers may determine their own selection criteria to satisfy themselves that you can meet the vocational requirements of the apprenticeship.

You must be committed and willing to work away from home.

With this qualification you'll be able to work on any type and size of ship - anywhere in the world.

### HOW TO APPLY

To join this apprenticeship programme, you will need to be employed by a relevant company, where you will carry out the 'on the job' elements of the programme.

We work with the following employers on this apprenticeship. If you are interested in this programme, here's how to apply:

**Stena Line** [www.stenaline.com/career/](http://www.stenaline.com/career/)

**James Fisher** [www.james-fisher.com/](http://www.james-fisher.com/)

**AW Crewing** Email your CV and a covering letter to [tp@awcrewing.com](mailto:tp@awcrewing.com)

## MARITIME MECHANICAL AND ELECTRICAL MECHANIC —

## LEVEL 2 APPRENTICESHIP

### ABOUT THIS APPRENTICESHIP

This is a Level 2 apprenticeship and is aimed at anyone over the age of 18 who has an interest in working as one of the following:

- **Motorman/Motorhand**
- **Marine Engineer**

Maritime mechanical and electrical mechanic are employed in the Royal Navy and Merchant Navy. The engineering knowledge and skills used in the role can be transferred to other entry level engineering roles in other industries.

Maritime mechanical and electrical mechanics work from engineering drawings, data and documentation in order to undertake the testing, fault diagnosis and maintenance of electrical, mechanical and fluid power equipment on ships and submarines. This can include propulsion machinery, weapons, sensors, reactors and auxiliary systems (such as water, air conditioning, electronic equipment including programmable logic controllers, power generation and distribution).

### ENTRY REQUIREMENTS

The apprentice must:

- have the right to work in England
- be 18 or older
- be physically fit and obtain a Maritime and Coastguard Agency ENG1 medical fitness certificate <https://www.gov.uk/seafarer-medical-certificates>
- have Level 2 English and Maths (GSCE4-9). Applicants not meeting English and Maths requirements will need to achieve this level of functional skills before End Point Assessment

Beyond this, employers may determine their own selection criteria to satisfy themselves that you can meet the vocational requirements of the Apprenticeship.

You must be committed and willing to work away from home.

With this qualification you'll be able to work on any type and size of ship - anywhere in the world.

### HOW TO APPLY

To join this apprenticeship programme, you will need to be employed by a relevant company, where you will carry out the 'on the job' elements of the programme.

We work with a number of employers on this apprenticeship - for more information visit [careersatsea.org/apply/how-to-apply/](http://careersatsea.org/apply/how-to-apply/)

### FIND OUT MORE

You can find details and the Apprenticeship Standard here -

<https://www.instituteforapprenticeships.org/apprenticeship-standards/small-vessel-chief-engineer-v1-0>



## OFFICER OF THE WATCH (NEAR COASTAL) —

### LEVEL 3 APPRENTICESHIP

#### ABOUT THIS APPRENTICESHIP

This is a Level 3 apprenticeship and is aimed at anyone over the age of 18 who wishes to achieve the Officer of the Watch (Near Coastal) qualification, which is aimed at individuals working on a wide range of specialist commercial vessels such as tugs, fishing boats and workboats working close to the shore, in waters designated by the Maritime and Coastguard Agency as “near coastal”\*. These vessels cannot be more than 500 gross tonnage. There are routes for new starters and experienced seafarers.

\*An area of operation restricted to 150 miles from a safe haven on the coast of the UK and 30 miles from Ireland.

#### ENTRY REQUIREMENTS

The apprentice must:

- have the right to work in England
- be 18 or older
- be physically fit and obtain a Maritime and Coastguard Agency ENG1 medical fitness certificate <https://www.gov.uk/seafarer-medical-certificates>
- have Level 2 English and Maths (GSCE4-9). Applicants not meeting English and Maths requirements will need to achieve this level of functional skills before End Point Assessment

#### HOW TO APPLY

To join this apprenticeship programme, you will need to be employed by a relevant company, where you will carry out the ‘on the job’ elements of the programme.

We work with a number of employers on this apprenticeship - for more information visit [careersatsea.org/apply/how-to-apply/](https://careersatsea.org/apply/how-to-apply/)

#### FIND OUT MORE

You can find details and the Apprenticeship Standard here - <https://www.instituteforapprenticeships.org/apprenticeship-standards/officer-of-the-watch-near-coastal-v1-0>



## SMALL VESSEL CHIEF ENGINEER —

### LEVEL 4 APPRENTICESHIP

#### ABOUT THIS APPRENTICESHIP

This is a Level 4 apprenticeship aimed at anyone aspiring to achieve the Small Vessel Chief Engineer qualification. This role ensures the day-to-day operation of the engineering aspects of a small vessel at sea and alongside (not at sea). This includes the vessel’s engine and other machinery and the technical side of ‘hotel services’ such as heating and ventilation.

#### ENTRY REQUIREMENTS

The apprentice must:

- have the right to work in England
- be 18 or older
- be physically fit and obtain a Maritime and Coastguard Agency ENG1 medical fitness certificate <https://www.gov.uk/seafarer-medical-certificates>
- have Level 2 English and Maths (GSCE4-9). Applicants not meeting English and Maths requirements will need to achieve this level of functional skills before End Point Assessment

#### HOW TO APPLY

To join this apprenticeship programme, you will need to be employed by a relevant company, where you will carry out the ‘on the job’ elements of this programme.

We work with a number of employers on this apprenticeship – for more information, go to:

**Boluda Towage Europe** <https://www.boluda.eu/career/vacancies>

**Svitzer** [https://svitzer.wd3.myworkdayjobs.com/Svitzer\\_Careers](https://svitzer.wd3.myworkdayjobs.com/Svitzer_Careers)

**Port of Dover** <https://www.portofdover.com/corporate/about/careers/>

**Mersey Ferries** <https://www.merseytravel.gov.uk/about/careers/>

#### FIND OUT MORE

You can find details and the Apprenticeship Standard here - <https://www.instituteforapprenticeships.org/apprenticeship-standards/small-vessel-chief-engineer-v1-0>

# FANTASTIC STUDENT SUCCESS RATE

SEE US IN ACTION FOR A TASTE OF WHAT'S TO COME

 [FleetwoodNauticalCampus](#)

 [Fleetwood\\_nc](#)

 [Fleetwood\\_nc](#)

 [Fleetwood-Nautical-Campus](#)

 [@fleetwoodnc](#)

## GENERAL ENQUIRIES

T 01253 504 800

E [MARITIME@BLACKPOOL.AC.UK](mailto:MARITIME@BLACKPOOL.AC.UK)



“

**IT'S A FANTASTIC CAREER (TRAINING INCLUDED!) AND SO FAR IT'S ONLY GIVEN ME FANTASTIC EXPERIENCES AND SKILLS**

My first time at the helm of a ship was very memorable; it was the day I was due leave the ship and that morning I was at the helm bringing the ship into Southampton (under the orders of the Master and the Pilot). Hands down one of the best things I've ever done.

”

*Ben Munson,  
Foundation Degree in Nautical Science*



# MARITIME CAREERS OPEN EVENTS AT FNC

We hold open events three times a year – usually January, July and November – where you can discover the valuable skills, knowledge and experiences that a career in the maritime industry can provide and understand the training programmes needed to qualify as an officer in the Merchant Navy. These events are open to anyone interested in a career at sea. Find out more and reserve your place at: <https://fleetwoodnautical.blackpool.ac.uk/maritime-careers-events-fleetwood-nautical-campus>



Maritime and Coastguard Agency



Degrees awarded by



VISIT OUR WEBSITE [FLEETWOODNAUTICAL.BLACKPOOL.AC.UK/MARITIME](https://fleetwoodnautical.blackpool.ac.uk/maritime)