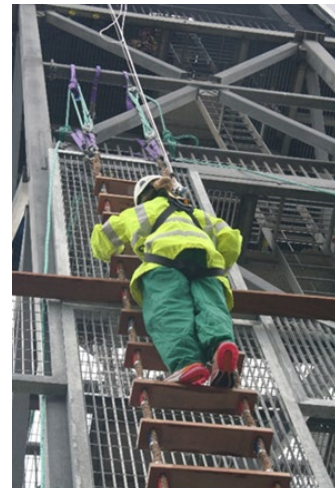


Marine Pilot Safety Ladder Training

Course Information

Duration	1 day
Course fee	£2310 per group of 8 delegates (price applicable until 31/07/2023)
Availability	On request
Contact	Gavin Burke gavin.burke@blackpool.ac.uk
Phone number	01253 504721
Email for bookings	OffshoreOps@blackpool.ac.uk
Delivery location	Fleetwood Offshore Survival Centre Broadwater Fleetwood FY7 8JZ United Kingdom



About this course

This course was developed at the request of industry to help demonstrate the basic level of proficiency required when planning a transfer by Pilot Ladder from Pilot Launch to Ship at sea.

It includes a classroom-based theory element covering aspects such as legislation and best practise, hazard and consequence and protective equipment (approximately 20% theory to 80% practical). The practical session is split into an outdoor 9m pilot ladder climb with combination ladder transfer utilising our dedicated work-at-height tower as well as a practical element of pilot transfer and emergency training in our Environmental Training Pool.

The training is designed to help develop confidence in an employee to challenge unsafe acts and make conscious and practical decisions in high-hazard situations at sea before committing to a pilot transfer.

All the above will allow an employer to demonstrate that they have met their legal/moral obligations, whilst giving the employee confidence that they have been well trained and are easily capable of carrying out a safe Pilot transfer at sea.

Certification

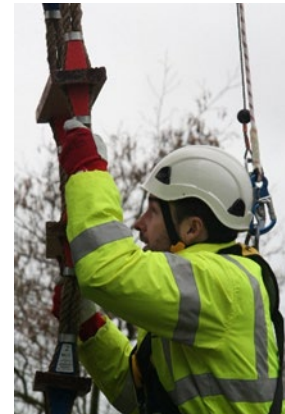
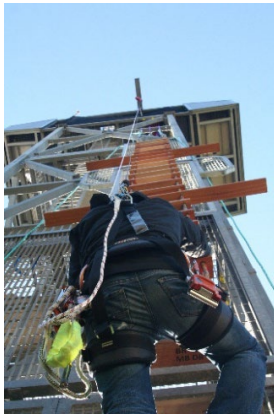
The certificate is awarded by Blackpool and the Fylde College.

Entry Requirements

There are no pre-requisites other than a requirement to be medically fit and free of illness/personal injury on the day of training as highlighted in the 'Medical Declaration' section below.

Medical Declaration

Parts of the course are of a physical nature. Delegates will be required to complete a medical declaration stating that they are fit to undertake practical training when they attend the course. This will be sent with joining instructions and delegates are requested to read this carefully so they are fully aware of the physical requirements.



Course details

This course gives those involved in Marine Pilot Transfer an understanding and awareness of the hazards, risks and control measures inherent within a diverse transfer environment at sea including:

- Regulations and company guidance
- Non-compliance
- Pilot boat familiarisation
- Life saving appliances
- Boarding arrangements
- Hadrian's Rail usage
- Communications
- Accidents and lessons learned
- PPE
- Emergency procedures including MOB recovery
- Practical transfers over water – 3m climb and bulwark ladder
- 9m vertical climb
- Survival techniques